

BOOSTERS



PASTELS



QUICK REFERENCE/MIXING RATIO GUIDE:

REF Permanent Cream Colour

*use scale for accurate and consistent measurements and results

Colour 1-10 Series > mixing ratio 1:1.5 > process 30 min.

High Lift 12 Series > mixing ratio 1:2.5 > process 50 min.

Resistant Grey Coverage Suggestions:

1. Cream Colour with 10, 20 or 30 vol. > mixing ratio 1:1.

2. Replace 25% of formula with .00 Series > mixing ratio 1:1.5.

3. Pre-softening > apply .3 Golds (2 levels lighter - no developer) directly to resistant areas - do not rinse.

Apply regular formula directly over pre-softened areas and continue with remainder of retouch application.

REF

NATURALS



COPPERS



SAHARAS



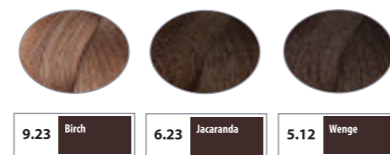
MAHOGANYS



REDS



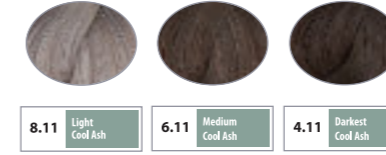
WOODS



ASHES



COOL ASHES



GOLDENS



CLEAR



PEARLS



COFFEES



QUICK REFERENCE/MIXING RATIO GUIDE:

REF Soft Colour Mixing Ratio 1:1

*use scale for accurate and consistent measurements and results

Refresh Mid/ Ends > Use 6 vol. > Apply to damp hair > process up to 30 min. **Toning** > **Use 6 vol.** > Apply to towel dried hair > process 5-20 minutes

Grey Blending/ Lowlights > Use 10 vol. > Apply to dry hair > process 30 min.

Uses for 0.00 Clear:

1. Conditioning clear gloss for shine.
2. Mix equal parts 0.00 to REF Soft Colour to achieve one level lighter end result and create more translucency.